

BioMime™ Branch TECHNICAL SPECIFICATIONS

STENT

Stent Material	: Cobalt Chromium L605
Strut Thickness	: 65 µm (0.065mm or 0.0026")
Stent Diameters(mm)	: 2.50-2.50, 3.00-2.50, 3.50-2.50, 3.50-3.00, 4.00-3.50 mm
Stent Lengths (mm)	: 16, 19, 24, 29 mm

DRUG / POLYMER

Drug	: Sirolimus
Equivalent Drug Dose	: 1.25 µg / mm ²
Polymer	: Biodegradable and Biocompatible (PLGA and PLLA)

DELIVERY SYSTEM

Delivery System	: Rapid Exchange
Balloon Type	: Step Balloon
Nominal Pressure	: 9 atm
Rated Burst Pressure	: 16 atm
Balloon Overhang	: ≤ 0.5 mm
Radiopaque Markers	: 4 - Platinum / Iridium
Usable Catheter Length	: 142 cm
Guide Catheter Compatibility	: 5F (Min. I. D. 0.056"/1.42 mm)
Max. Guidewire	: 0.014" (0.36 mm)

BioMime™ Branch ORDERING INFORMATION

Diameter	Stent Length			
	16 mm	19 mm	24 mm	29 mm
Main Branch - Side Branch				
2.50 - 2.50 mm	BBR25025016	BBR25025019	BBR25025024	BBR25025029
3.00 - 2.50 mm	BBR30025016	BBR30025019	BBR30025024	BBR30025029
3.50 - 2.50 mm	BBR35025016	BBR35025019	BBR35025024	BBR35025029
3.50 - 3.00 mm	BBR35030016	BBR35030019	BBR35030024	BBR35030029
4.00 - 3.50 mm	BBR40035016	BBR40035019	BBR40035024	BBR40035029

Disclaimer :BioMime™ Branch length of 29mm is not CE approved



E askinfo@merillife.com
W www.merillife.com

Manufacturer:
Meril Life Sciences Pvt. Ltd.
Survey No. 135/139, Bilakhia House,
Muktanand Marg, Chala, Vapi - 396 191.
Gujarat, India.
T +91 260 240 8000

Subsidiary companies: Meril Life Sciences Pvt. Ltd., 301, A-Wing, Business Square, Chakala, Andheri Kurla Road, Andheri East, Mumbai 400 093 T +91 22 39350700 F +91 22 39350777

Meril, Inc. 2436 Emrick Boulevard, Bethlehem, PA 18020 T +610 500 2080 F +610 317 1672

Meril South America Doc Med LTDA Al. dos Tupiniquins, 1079 - Cep: 04077-003 - Moema, Sao Paulo, Brazil. T +55 11 3624 5935 F +55 11 3624 5936

Meril GmbH. Bornheimer Strasse 135-137, D-53119 Bonn, Germany. T +49 228 7100 4000 F +49 228 7100 4001

Meril Tibbi Cihazlar Meril Tibbi Cihazlar İmalat ve Ticaret A.Ş. İçerenköy Mah. Çetinkaya Sok. Prestij Plaza No:28 Kat:4 Ataşehir, 34752 İstanbul / Turkey T +90 216 641 44 24 F +90 216 641 44 25

Meril China Co. Ltd. 2301b,23f, Lixin Plaza, no 90, South Hubin Road, Xiamen, China T 0086-592-5368505 F 0086-592-5368519

Meril SA Pty. Ltd. 102, 104, S101 and S102, Boulevard West Office Park, 142 Western Service Road, Erf 813 Woodmead Extension 17 Sandton, Johannesburg - 2191 South Africa T +27 11 465-2049 F +27 86 471 7941

Meril Medical LLC. Nauchnyi Proezd 19, Moscow, Russia - 117 246. Office - +7 495 772 7643

EU representative. Obelis S.A. Bd, General Wahis 53, 1030, Brussels, Belgium. T +32 2 732 5954 F +32 2 732 6003 E mail@obelis.net

Meril

More to Life

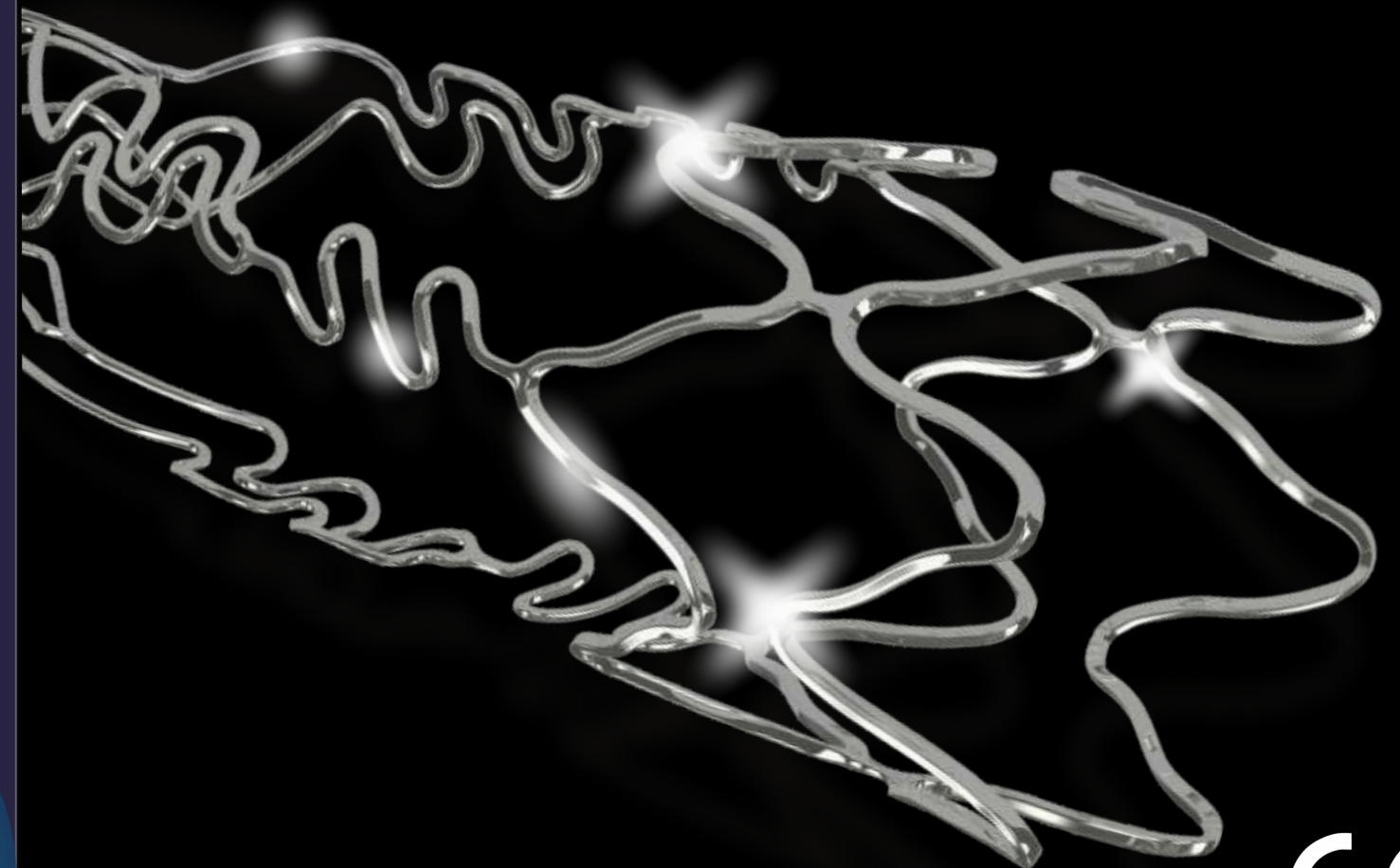
MEDITRANS 

Meril

Intuitive Solution for Bifurcations

biomime™ branch

Sirolimus Eluting Coronary Side Branch Stent System



For the use of a Registered Medical Practitioner of Hospital or Laboratory only

BBR/BROCHURE/005/MLS/20200907/GLOBAL



Official Partner **MEDITRANS** 



Jakarta : Jl Munggang no. 86-87 Balekambang Kramat Jati, Jakarta Timur, 13530
Surabaya : Rungkut Menanggal Harapan Blok O No. 28, Surabaya 60293
Others : Bandung, Makassar, Medan, Balikpapan



(+62) 21 2204 7248
(+62) 31 8786 2593
(+62) 821 8000 1102



www.meditrans.id



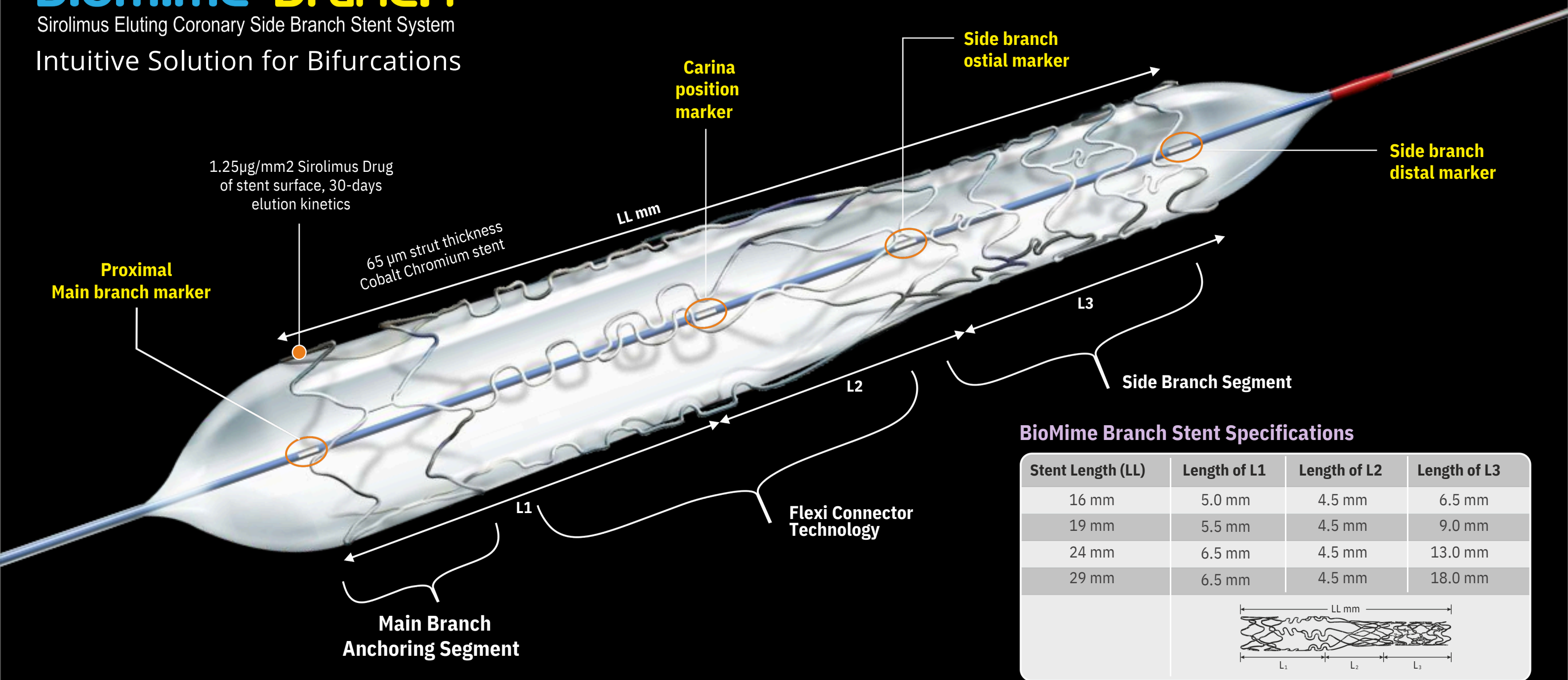
meditrans.id



info@meditrans.id



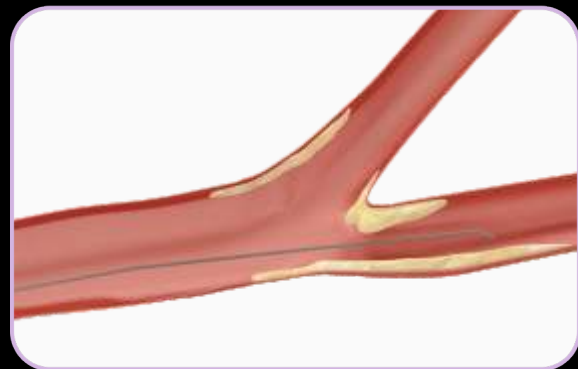
meditransid



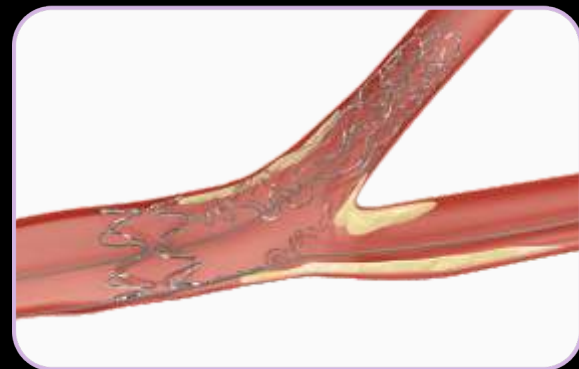
BioMime Branch Stent Specifications

Stent Length (LL)	Length of L1	Length of L2	Length of L3
16 mm	5.0 mm	4.5 mm	6.5 mm
19 mm	5.5 mm	4.5 mm	9.0 mm
24 mm	6.5 mm	4.5 mm	13.0 mm
29 mm	6.5 mm	4.5 mm	18.0 mm

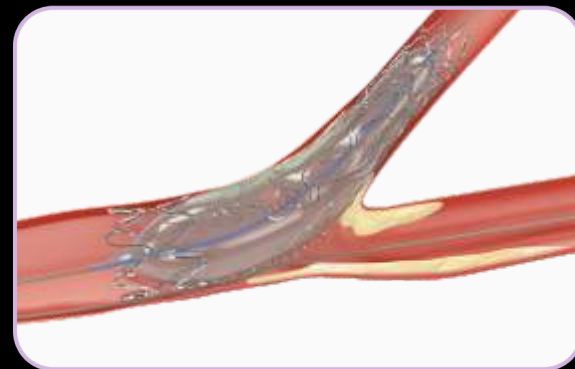
BioMime Branch Deployment Technique



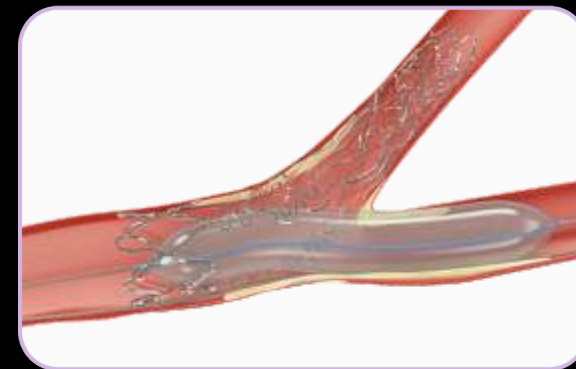
STEP 1
Prepare and Predilate the side branch lesion



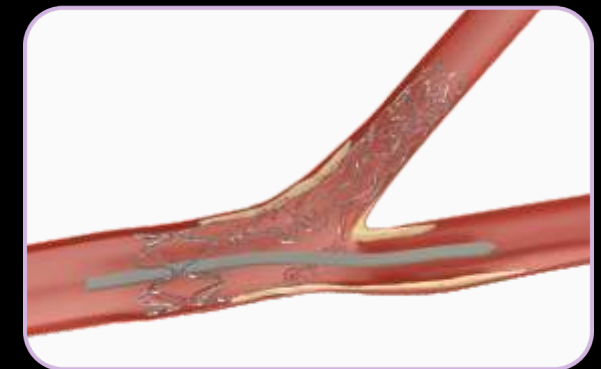
STEP 2
Deployment of BioMime Branch



STEP 3
Post dilation



STEP 4
Prepare the main branch



STEP 5
Deploy stent in main branch and follow up with Kissing Balloon Technique with both main and side branch