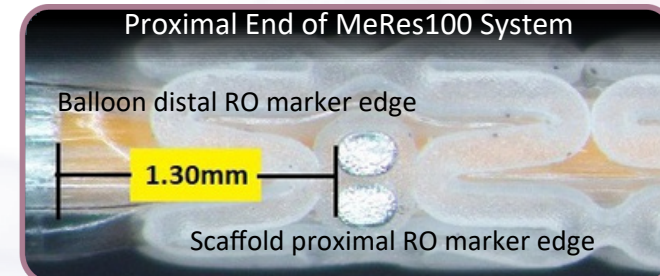
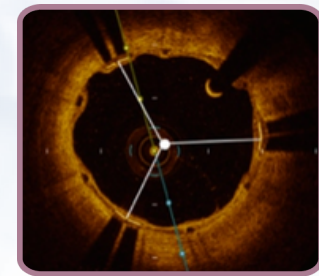


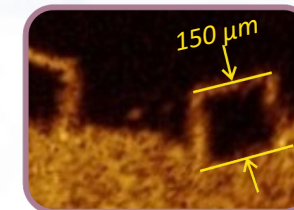
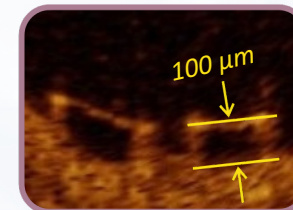
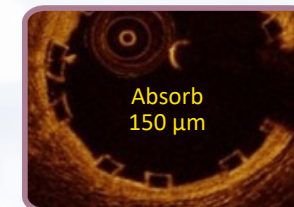
MeRes100™ - BRS with Enhanced Radiopacity



MeRes100 couplets of tri-axial RO markers on both ends of the scaffold, gives a sense of virtual tubing and high operator comfort.

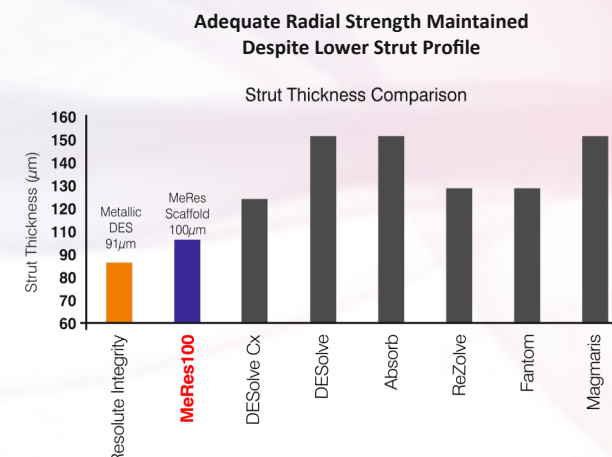
Distance from edge of Balloon RO marker (both proximal & distal) to edge of Scaffold RO = 1.3 mm

MeRes100™ - BRS with Best-in-Class Strut Thickness

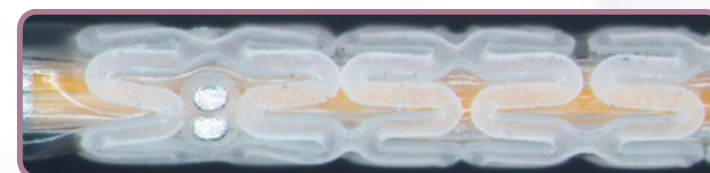


MeRes100 is a 100 µm strut thickness scaffold with a propensity to minimize vascular injury & ensure early endothelialization.

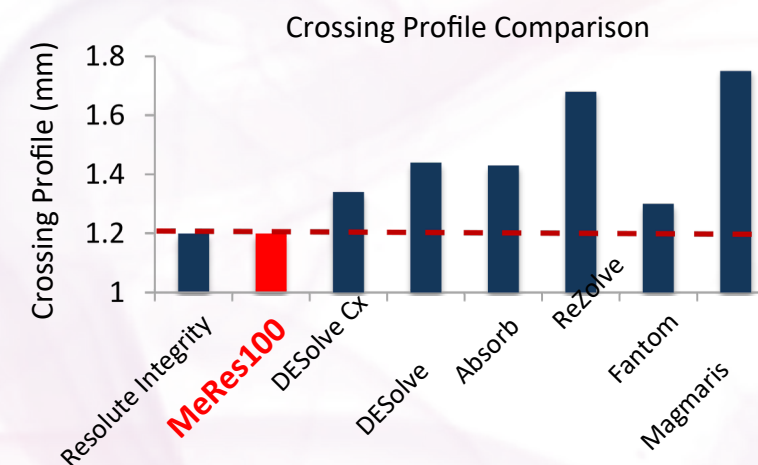
Unique manufacturing process, novel hybrid design concept incorporating width variability allows for best-in-class, **DES-like strut thickness** in MeRes100.



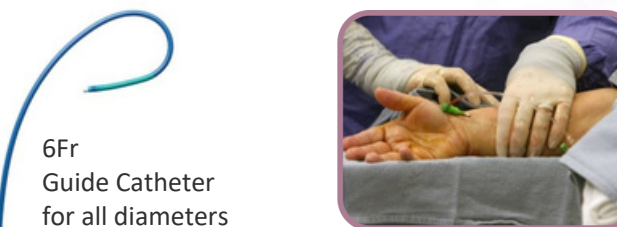
MeRes100™ - BRS with Best-in-Class Crossing Profile



Average crossing profile of 1.2 mm for Ø 3.00 mm



Unique crimping process, novel hybrid design concept incorporating low strut thickness allows for best-in-class, **DES-like crossing profile** in MeRes100.



6Fr Guide Catheter for all diameters

MeRes100™ - BRS TECHNICAL SPECIFICATIONS

SCAFFOLD BACKBONE
 Scaffold Material : BioResorbable PLLA (Poly L-lactide)
 Scaffold Strut Thickness : 100 µm
 Scaffold Diameters : 2.25, 2.50, 2.75, 3.00, 3.25, 3.50, 4.00 mm
 Scaffold Lengths : 13, 16, 19, 24, 29, 32, 37, 40 mm

SCAFFOLD RO MARKERS
 Tri-axial RO Markers : Platinum (Couplets of tri-axial RO markers on both ends, 120° apart from each other)

TOP COAT-DRUG+POLYMER
 Drug : Sirolimus
 Equivalent Drug Dose : 1.25 µg / mm²
 Polymer : Bioresorbable PDLLA (Poly D, L-lactide)

DELIVERY SYSTEM
 Delivery System : Rapid Exchange
 Nominal Pressure (NP) : 9 atm (Refer labels for more details)
 Rated Burst Pressure (RBP) : 16 atm (Refer labels for more details)
 Balloon Overhang : < 1 mm
 Shaft Outer Diameter : (Refer IFU for more details)
 Proximal: 2.13F, Distal: 2.7F for lineage delivery system

Radiopaque Markers : 2 - Platinum / Iridium
 Usable Catheter Length : 142 cm (Refer IFU for more details)
 Guide Catheter Compatibility : 6 F (Min. I D 0.070" / 1.8 mm)
 Max. Guidewire : 0.014" (0.36 mm)

MeRes100™ - BRS ORDERING INFORMATION

Diameter / Lengths	13mm	16mm	19mm	24 mm
2.25 mm	MRS22513	MRS22516	MRS22519	MRS22524
2.50 mm	MRS25013	MRS25016	MRS25019	MRS25024
2.75 mm	MRS27513	MRS27516	MRS27519	MRS27524
3.00 mm	MRS30013	MRS30016	MRS30019	MRS30024
3.25 mm	MRS32513	MRS32516	MRS32519	MRS32524
3.50 mm	MRS35013	MRS35016	MRS35019	MRS35024
4.00 mm	MRS40013	MRS40016	MRS40019	MRS40024

Diameter / Lengths	29 mm	32 mm	37 mm	40 mm
2.25 mm	MRS22529	MRS22532	MRS22537	MRS22537
2.50 mm	MRS25029	MRS25032	MRS25037	MRS25040
2.75 mm	MRS27529	MRS27532	MRS27537	MRS27540
3.00 mm	MRS30029	MRS30032	MRS30037	MRS30040
3.25 mm	MRS32529	MRS32532	MRS32537	MRS32540
3.50 mm	MRS35029	MRS35032	MRS35037	MRS35040
4.00 mm	MRS40029	MRS40032	MRS40037	MRS40040

Contact your country local Meril sales representative for availability of sizes highlighted in orange
 MeRes100 is not approved by USFDA and not available for sale in USA.
 Information for the use only in countries with applicable health authority product registrations.
 Absorb is a product of Abbott Laboratories, Resolute Integrity is a product of Medtronic, DESolve and DESolve CX are products of Elixir Medical, ReZolve and Fantom are product of REVA Medical, Magmaris is a product of Biotronik AG.



More to Life

Manufacturer:
 Meril Life Sciences Pvt. Ltd.
 Survey No. 135/139, Bilakhia House,
 Muktanand Marg, Chala, Vapi - 396 191,
 Gujarat, India.
 T +91 260 240 8000

Subsidiary companies: Meril Life Sciences Pvt. Ltd. 301, A-Wing, Business Square, Chakala, Andheri Kurla Road, Andheri East, Mumbai 400 093
 T +91 22 39350700 F +91 22 39350777

Meril, Inc. 2436 Emrick Boulevard, Bethlehem, PA 18020 T +610 500 2080 F +610 317 1672

Meril South America Doc Med LTDA Al. dos Tupiniquins, 1079 - Cep: 04077-003 - Moema, Sao Paulo, Brazil. T +55 11 3624 5935 F +55 11 3624 5936

Meril GmbH, Bornheimer Strasse 135-137, D-53119 Bonn, Germany, T +49 228 7100 4000 F +49 228 7100 4001

Meril Tibbi Cihazlar Meril Tibbi Cihazlar Imalat ve Ticaret A.Ş. İçerenköy Mah. Çetinkaya Sok. Prestij Plaza No:28 Kat:4 Ataşehir, 34752 İstanbul / Turkey T +90 216 641 44 24 F +90 216 641 44 25

Meril China Co. Ltd. 2301b,23f, Lixin Plaza, no 90, South Hubin Road, Xiamen, China T 0086-592-5368505 F 0086-592-5368519

Meril SA Pty. Ltd. 102, 104, S101 and S102, Boulevard West Office Park, 142 Western Service Road, Erf 813 Woodmead Extension 17 Sandton, Johannesburg - 2191 South Africa T +27 11 465-2049 F +27 86 471 7941

Meril Medical LLC, Nauchnyi Proezd 19, Moscow, Russia - 117 246. Office - +7 495 772 7643

EU representative: Obelis S.A. Bd, General Wahnis 53, 1030, Brussels, Belgium. T +32 2 732 5954 F +32 2 732 6003 E mail@obelis.net

E askinfo@merillife.com W www.merillife.com



For the use of a Registered Medical Practitioner or Laboratory only

MeRes100™

Sirolimus Eluting BioResorbable Vascular Scaffold System

Simply Sublime.

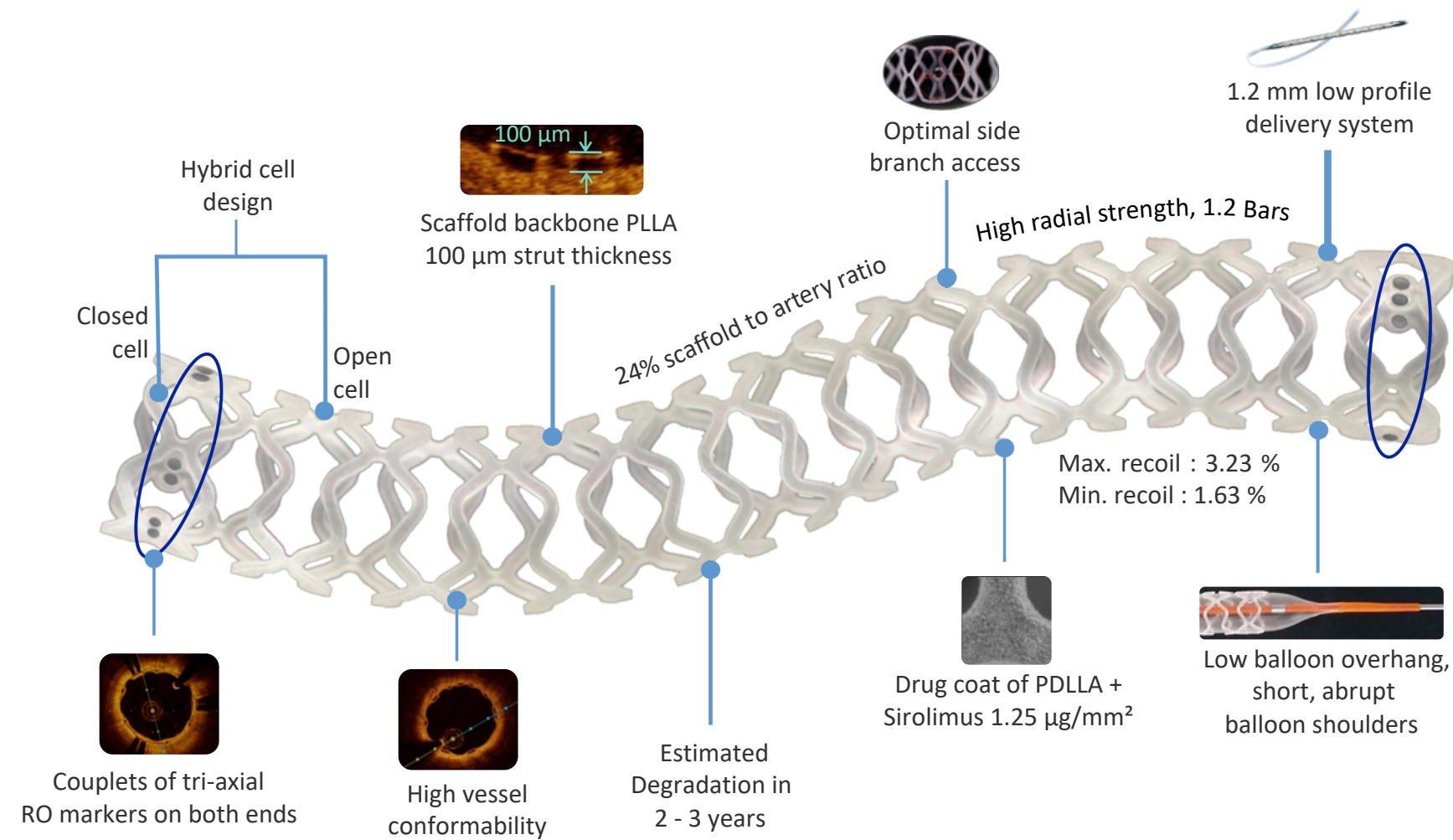


MeRes100™

Sirolimus Eluting BioResorbable Vascular Scaffold System

Simply Sublime.

Next Generation BioResorbable Scaffold.



Size Matrix
 Diameters: 2.25, 2.50, 2.75, 3.00, 3.25, 3.50, 4.00 mm
 Lengths: 13, 16, 19, 24, 29, 32, 37, 40 mm



MeRes-1 FiM Study: Safety and Efficacy of BRS in 108 Patients with Single, De-novo Coronary Lesions (in up to 2 vessels)

3-Year Follow-up

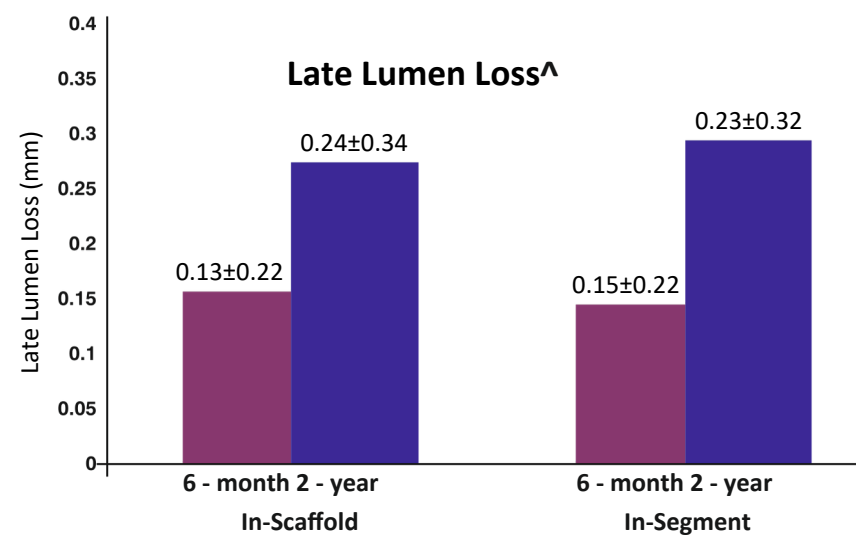
0%

Stent Thrombosis
 Cardiac Death
 Myocardial Infarction

Clinical follow-up results

Events, n (%)	In-hospital N=108	1-month N=108	6-month N=108	1-year* N=107	2-year^ N=107	3-year^ N=107
MACE	0 (0%)	0 (0%)	0 (0%)	1 (0.93%)	2 (1.87%)	2 (1.87%)
Cardiac death	0 (0%)	0 (0%)	0 (0%)	0 (0%)	0 (0%)	0 (0%)
Myocardial infarction#	0 (0%)	0 (0%)	0 (0%)	0 (0%)	0 (0%)	0 (0%)
Ischemia-driven TLR	0 (0%)	0 (0%)	0 (0%)	1 (0.93%)	2 (1.87%)	2 (1.87%)
Scaffold thrombosis\$	0 (0%)	0 (0%)	0 (0%)	0 (0%)	0 (0%)	0 (0%)

Myocardial Infarction defined as per WHO criteria; \$SARC defined criteria.



Paired assessment of OCT[^]

N=9	Post-Procedure	6-month	2-years
Mean abluminal scaffold area (mm ²)	8.06	8.64	8.39
Mean strut core area (mm ²)	0.14	0.11	0.06
% Covered struts	-	98.99%	99.24%

[^]OCT analysis done by Cardialysis BV, Rotterdam, The Netherlands

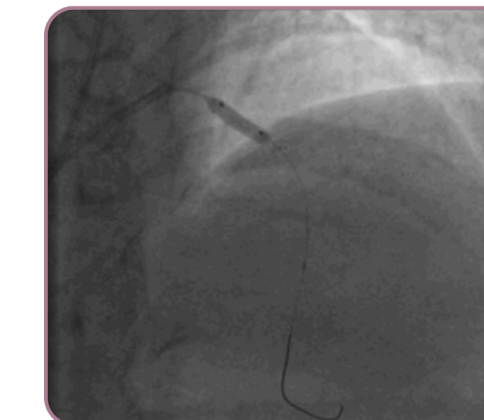
MeRes100™ BRS Implantation

53 Years | Male | Diabetic | Hypertensive | No family history | Non-smoker | Stable angina

Diagnostic Angio



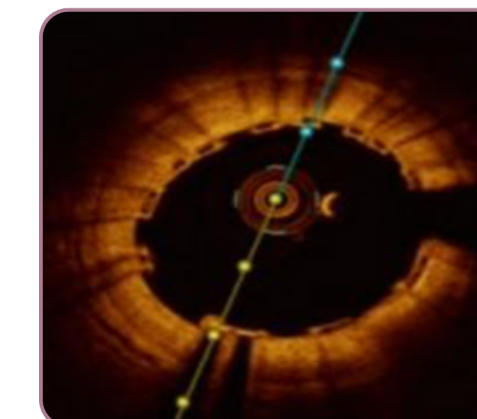
MeRes100 3.50 x 19 mm



Final Result



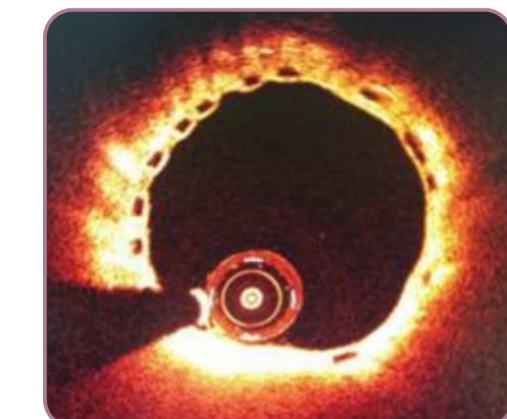
Baseline OCT



6-Months f/up



6-Months OCT f/up



Data on file at Meril Life Sciences, Pvt. Ltd.

[^] Seth A, et al. Three-year clinical and two-year multimodality imaging outcomes of a thin-strut sirolimus-eluting bioresorbable vascular scaffold: MeRes-1 trial. EuroInterven. 2019 Sep 20;15(7):607-614.
^{*} Seth A, et al. First-in-human evaluation of a novel poly-L-lactide based sirolimus-eluting bioresorbable vascular scaffold for the treatment of de novo native coronary artery lesions: MeRes-1 trial. EuroInterven. 2017 Jul;13(4):415-23.