

METAFOR™ TECHNICAL SPECIFICATIONS

STENT

Stent Material	: Cobalt Chromium (L605)
Strut Thickness	: 65µm (0.065mm or 0.026")
Stent Diameter (mm)	: 2.00, 2.25, 2.50, 2.75, 3.00, 3.50, 4.00, 4.50
Stent Length (mm)	: 8, 13, 16, 19, 24, 29, 32, 37, 40, 44, 48
Mean Recoil	: ≤4.0%
Mean Foreshortening	: ≤1.0%

DRUG/POLYMER

Drug	: Sirolimus
Equivalent Drug Dose	: 1.25 µg/ mm ²
Polymer	: Biodegradable & Biocompatible (PLLA + PLGA)

DELIVERY SYSTEM

Delivery System	: Rapid Exchange
Nominal Pressure	: 9 atm (Refer IFU)
Rated Burst Pressure	: Rated Burst Pressure: 14/16 atm*
*RBP 14 atm for 4.50 mm diameter, all lengths.	
*RBP 14 atm for all diameter with length >40mm. (Refer IFU for more details)	
Balloon Overhang	: ≤ 0.5 mm
Shaft Outer Diameter	: Proximal: 2.13 F Distal: 2.7 F (Refer IFU for more details)
Radiopaque Markers	: Two Platinum / Iridium Markers
Usable Catheter Length	: 142 cm (Refer IFU for more details)
Guide Catheter Compatibility	: 5F (Min. I. D. 0.056" / 1.42 mm)

Crossing Profile

	Stent Diameter	Crossing Profile
	2.00 mm	0.83mm/0.033"
	2.25 mm	0.85mm/0.033"
	2.50 mm	0.91mm/0.036"
	2.75 mm	0.98mm/0.039"
	3.00 mm	0.99mm/0.039"
	3.50 mm	1.06mm/0.042"
	4.00 mm	1.16mm/0.046"
	4.50 mm	1.19mm/0.047"
Max. Guidewire	: 0.014" (0.36)	

METAFOR™ ORDERING INFORMATION

Diameters / Lengths	8 mm	13 mm	16 mm	19 mm	24 mm	29 mm
2.00 mm	-	MTR20013	MTR20016	MTR20019	MTR20024	MTR20029
2.25 mm	MTR22508	MTR22513	MTR22516	MTR22519	MTR22524	MTR22529
2.50 mm	MTR25008	MTR25013	MTR25016	MTR25019	MTR25024	MTR25029
2.75 mm	MTR27508	MTR27513	MTR27516	MTR27519	MTR27524	MTR27529
3.00 mm	MTR30008	MTR30013	MTR30016	MTR30019	MTR30024	MTR30029
3.50 mm	MTR35008	MTR35013	MTR35016	MTR35019	MTR35024	MTR35029
4.00 mm	MTR40008	MTR40013	MTR40016	MTR40019	MTR40024	MTR40029
4.50 mm	MTR45008	MTR45013	MTR45016	MTR45019	MTR45024	MTR45029

Diameters / Lengths	32 mm	37 mm	40 mm	44 mm	48 mm
2.00 mm	MTR20032	MTR20037	MTR20040	MTR20044	MTR20048
2.25 mm	MTR22532	MTR22537	MTR22540	MTR22544	MTR22548
2.50 mm	MTR25032	MTR25037	MTR25040	MTR25044	MTR25048
2.75 mm	MTR27532	MTR27537	MTR27540	MTR27544	MTR27548
3.00 mm	MTR30032	MTR30037	MTR30040	MTR30044	MTR30048
3.50 mm	MTR35032	MTR35037	MTR35040	MTR35044	MTR35048
4.00 mm	MTR40032	MTR40037	MTR40040	MTR40044	MTR40048
4.50 mm	MTR45032	MTR45037	MTR45040	MTR45044	MTR45048

Contact your country local Meril sales representative for availability of sizes highlighted in red

Metafor is a registered trademark of Meril Life Sciences Pvt. Ltd.

Meril

More to Life

Manufacturer:

Meril Life Sciences Pvt. Ltd.
Survey No. 135/139, Bilakhia House,
Muktanand Marg, Chala, Vapi - 396 191.
Gujarat, India.
T +91 260 240 8000

Subsidiary companies:

Meril Life Sciences Pvt. Ltd.
301, A-Wing, Business Square,
Chakala, Andheri Kurla Road,
Andheri East, Mumbai 400 093
T +91 22 39350700
F +91 22 39350777

Meril, Inc.

2436 Emrick Boulevard,
Bethlehem, PA 18020
T +610 500 2080
F +610 317 1672

Meril South America

Meril South America
Doc Med LTDA
Alameda dos Maracatins 992,
Edificio Aquarius, Andar 8,
Bloco B, Moema - CEP -04089001,
Sao Paulo, Brazil.
Tel: +5511 2506-3624

Meril GmbH.

Bornheimer Strasse 135-137,
D-53119 Bonn,
Germany.
T +49 228 7100 4000
F +49 228 7100 4001

Meril Tibbi Cihazlar

Meril Tibbi Cihazlar İmalat ve Ticaret A.Ş.
İçerenköy Mah. Çetinkaya Sok.
Prestij Plaza No:28
Kat:4 Ataşehir, 34752
İstanbul / Turkey
T +90 216 641 44 24
F +90 216 641 44 25

Meril China Co. Ltd.

2301b,23f, Lixin Plaza,
no 90, South Hubin Road,
Xiamen, China
T 0086-592-5368505
F 0086-592-5368519

Meril SA Pty. Ltd.

102, 104, S101 and S102,
Boulevard West Office Park,
142 Western Service Road,
Erf 813 Woodmead Extension 17
Sandton, Johannesburg - 2191
South Africa
T +27 11 465-2049
F +27 86 471 7941

Meril Medical LLC.

Nauchnyi Proezd 19,
Moscow, Russia - 117 246.
Office - +7 495 772 7643

EU representative.

Obelis S.A.
Bd, General Wahis 53,
1030, Brussels, Belgium.
T +32 2 732 5954
F +32 2 732 6003
E mail@obelis.net

CE
0123

E askinfo@merillife.com
W www.merillife.com

METAFOR™

Sirolimus Eluting Coronary Stent System

MEDITRANS

Meril

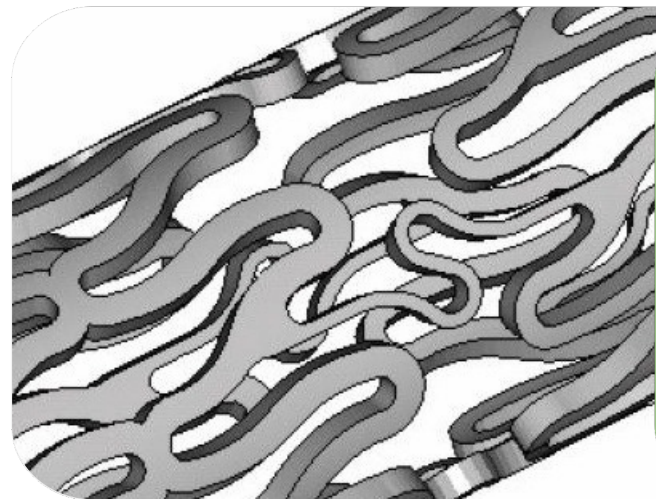
METAFOR™

Sirolimus Eluting Coronary Stent System

MTR/BROCHURE/008/MLS/20240527/GLOBAL

Stent Architecture

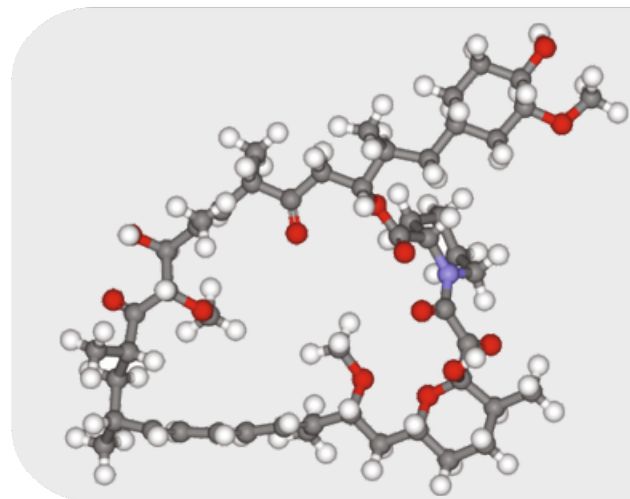
- Primary stent platform for Metafor™ SES is NexGen™ Cobalt Chromium Coronary Stent System.
- Unique cell design comprising of an intelligent mix of open and close cells.
- Low strut thickness 65 μm cobalt chromium L605 coupled with variable strut width composition results in a structure which provides optimal radial strength with flexibility



The average metal
to artery ratio in
Metafor™ ~ 14%

Anti-proliferative Drug - Sirolimus

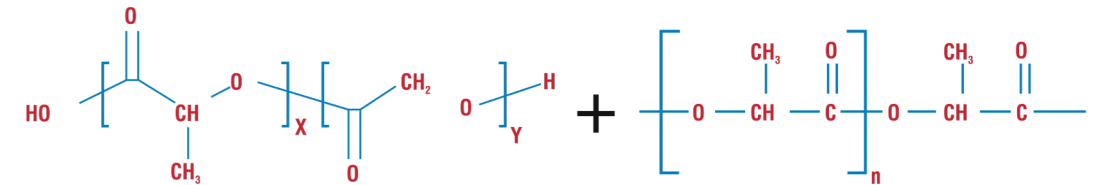
- It is known that Sirolimus inhibits T-lymphocyte activation and smooth muscle and endothelial cell proliferation in response to cytokine and growth factor stimulation. In cells, sirolimus binds to the immunophilin, FK Binding Protein-12 (FKBP-12). The sirolimus-FKBP 12 complex binds to and inhibits the activation of the mammalian Target of Rapamycin (mTOR), leading to inhibition of cell cycle progression from the G1 to the S phase.



Metafor™ has
1.25 μg/mm²
of Sirolimus drug
loaded on its
stent surface

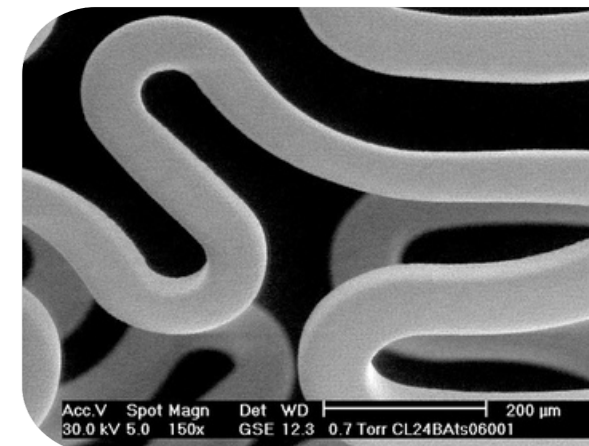
Biodegradable Polymer base

- Metafor™ SES has a unique biocompatible and biodegradable polymer base.
- The polymer elutes almost simultaneously as the drug thus minimizing the propensity for a polymer related inflammation.



Drug Release Platform

- Metafor™ SES uses a validated formulation of low dose sirolimus (1.25 μg/mm²) timed to elute in ~ 30 days from a biodegradable polymer base which degrades simultaneously.
- Specially developed spray coating technology results in a uniform, homogeneous coating ensuring coating integrity.



SEM of Metafor™ surface

Strut thickness
65 μm
cobalt chromium
L605 struts

Sirolimus +
Biodegradable
polymer
coating ~2 μm

